



**Beyond the limitations,
Create solution**

SM Solution Co., LTD.
Marine & Offshore Total Solution

MESSAGE FROM THE CEO

SM Solution Co., Ltd. started out as Busan Office of Samsung Heavy Industries Co., Ltd., a global leader of shipbuilding industry and was spun off from Samsung Heavy Industries in 1998. SM Solution is one of the representative small and medium enterprise in republic of Korea that has full experience and knowledge in purchasing, inspection, supply of A/S materials and logistics partnership and exports high quality equipment for marine & offshore business to overseas shipyards in the United States, China, Vietnam, Singapore, etc.

We will prioritize requirements of customers at all times, purchasing materials at competitive prices for customer satisfaction. We strive to deliver materials to customers in the right place at the right time after carrying out a thorough inspection based on accumulated professional knowledge.

We make efforts to be the best, advanced firm for offering greater benefit & best services to customers. We truly appreciate your cooperation and look forward to constant support and encouragement from you.

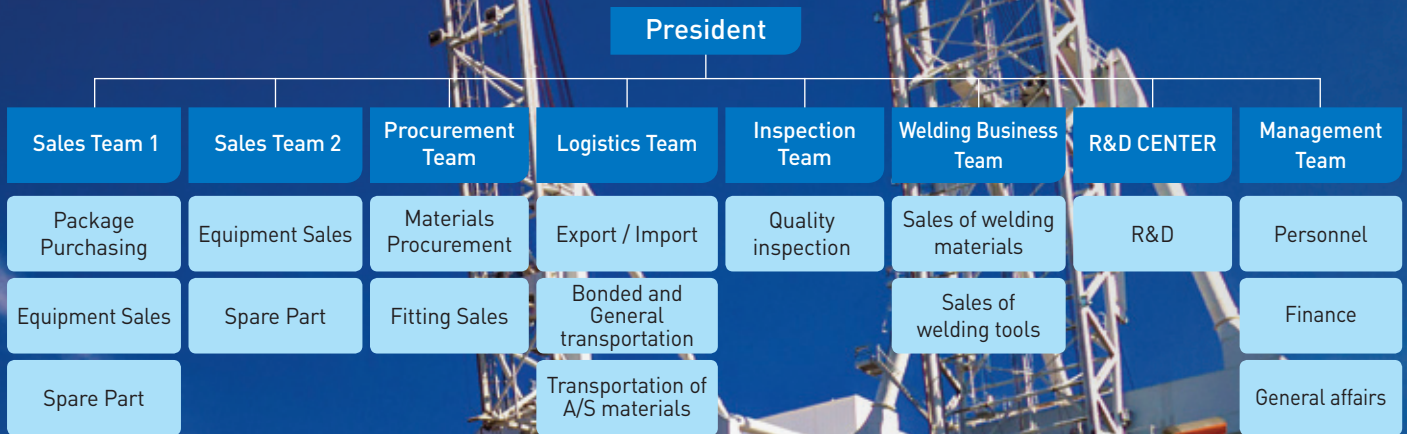
CEO **S.H.HAN**



HISTORY

- | | | | |
|---|---|---|---|
| <p><u>1998</u></p> <p>07 Spin-off from Samsung Heavy Industries Co., Ltd.</p> | <p><u>2010</u></p> <p>06 Signed ZPMC 8,000T FLOATING DOCK (4 ships) equipment purchasing contact</p> | <p><u>2012</u></p> <p>12 Signed Samsung Heavy Industries Ningbo Corporation 13,000T HEAVY CARGO CARRIER (1 ships) equipment purchasing contract</p> | <p><u>2014</u></p> <p>04 Signed PSI (APSI previously) MATSON PROJECT CV 3600TEU (2 ships) equipment purchasing contract</p> |
| <p><u>2008</u></p> <p>06 Signed SHANHAI GUAN and COSCO DALIAN shipyard 130,000T FLOATING DOCK (4 ships) equipment purchasing contract</p> | <p><u>2011</u></p> <p>09 Signed PSI (APSI previously) EXXON MOBILE PROJECT 115K C.O.T (2 ships)
11 Relocated office to 2F, Haeyang Bldg, 9, Chungjang-daero 13beon-gil, Jung-gu, Busan, Korea</p> | <p><u>2013</u></p> <p>06 Signed Samsung Heavy Industries Ningbo Corporation CAPITAL PROJECT 50K MR PC (10 ships) equipment purchasing contract
12 Signed PSI (APSI previously) inspection contract (50K PC 8 ships)</p> | <p><u>2015</u></p> <p>09 Signed Samsung Heavy Industries Ningbo Corporation MAERSK PROJECT 50K MR PC (9ships) equipment purchasing contract</p> |

Organization



Leading to the future

Certification : ISO 9001

2017

- 03 Acquired ISO 9001 : 2015 (ABS QE)
- 06 Signed PSI CV 3700TEU (2 ships) equipment purchasing contract

2018

- 01 Relocated office to 509, Busan Venture Tower, 22, Mora-ro, Sasang-gu, Busan, Korea

2019

- 04 Established R&D Center

2022

- 03 Signed Sangsangin 35K Floating Dock [1 ship] equipment purchasing contract
- 06 Signed PSI SRIV Rock Install Vessel [1 ship] equipment purchasing contract
- 09 MSCL MV Umoza Prj. [1 ship] equipment purchasing contract

2023

- 02 Signed PSI MATSON ALOHA CLASS L CV 3600TEU [3 ships] equipment purchasing contract



Purchasing



Inspection



Spare Part





Procurement



Logistics



Welding Rod Sales





Purchasing

The skillful buyers with professional knowledge provide total services for purchasing all materials needed for shipbuilding of domestic and overseas shipyards.

Package Purchasing

We supply all materials for shipbuilding such as equipment & machinery, steel outfittings, raw materials and bulks.

LNG CCS Installation Jig

We produce and supply LNG CCS Installation Jig.

Facilities Parts Purchasing

We supply equipment components and consumable materials used to make ship blocks to Ningbo and Rongcheng Corporations of Samsung Heavy Industries.

- » **Hull Part**
Deck machinery, BWTS, Fire fighting etc.
- » **Machinery Part**
Main engine, Generator, Propeller, Heater, Pump, Valve remote control system etc.
- » **Electric Part**
Automation system, Intercommunication, Lighting etc.

- » **Accommodation Part**
Unit toilet, Paneling, Windows, Joiner door, Galley & Laundry Equipment etc.
- » **Bulk & Raw Materials**
Steel plate, Pipe, Steel outfittings, Valve, Fitting etc.



Procurement

We supply various outfittings for marine and offshore business of Samsung Heavy Industries in a timely manner.

Major Item

- » Hull Part : Silencer, Heating coil etc.
- » Machinery Part : Davit, Damper, Rope etc.
- » Electric Part : Multi core tube, Gauge etc.
- » Accommodation Part
: Steel furniture, Electric heater, Valve, Bolt, Nut etc.

Logistics

We provide various transportation services including imported & exported of materials for Samsung Heavy Industries.

- » Sea and air import and export business
- » Bonded transportation and general inland transportation of imported cargo
- » Transportation and storage of A/S materials for ships built by Samsung Heavy Industries
- » Just-in-Time (JIT) delivery of domestic materials (gathering, storage, packaging, transportation)

Spare Part

We supply genuine equipment with reasonable prices to each agent in many countries as customer including major shipowner.

Inspection

We guarantee quality required by customers through FAT for purchased items by us and regular management of maker.

We also offer inspection service on other materials upon customer request.

Welding Rod Sales

We supply welding materials and welding tools of domestic and overseas welding material makers as agents of Kobe Welding, Chosun Welding, Hyundai Welding, KISWEL and ESAB SeAh.



HEAD OFFICE & R&D CENTER

509, Busan Venture Tower, 22, Mora-ro, Sasang-gu, Busan, Korea
TEL : +82-51-320-0700 FAX : +82-51-320-0755